

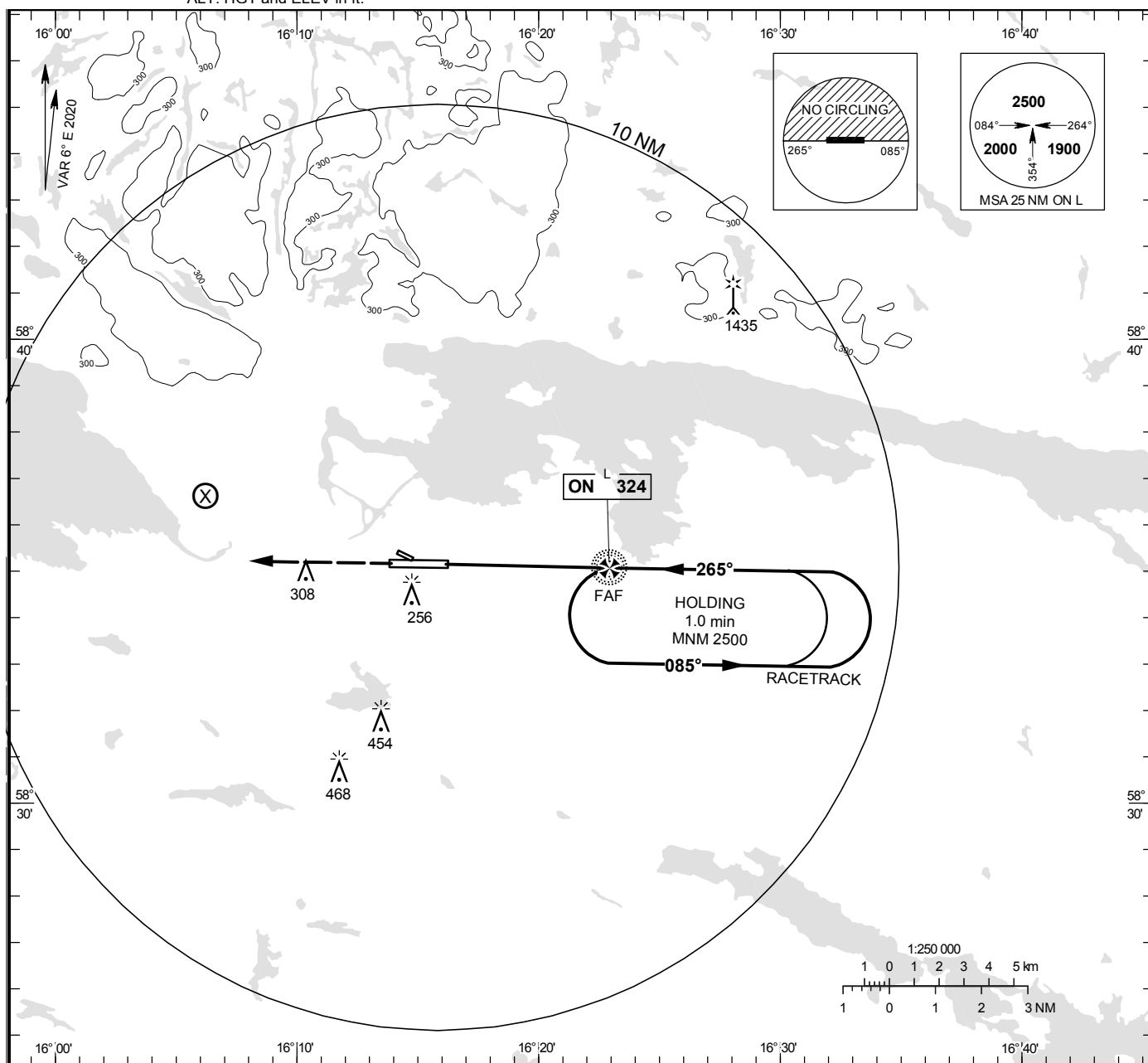
NORRKÖPING/Kungsängen

NDB RWY 27

INSTRUMENT
APPROACH
CHART – ICAO

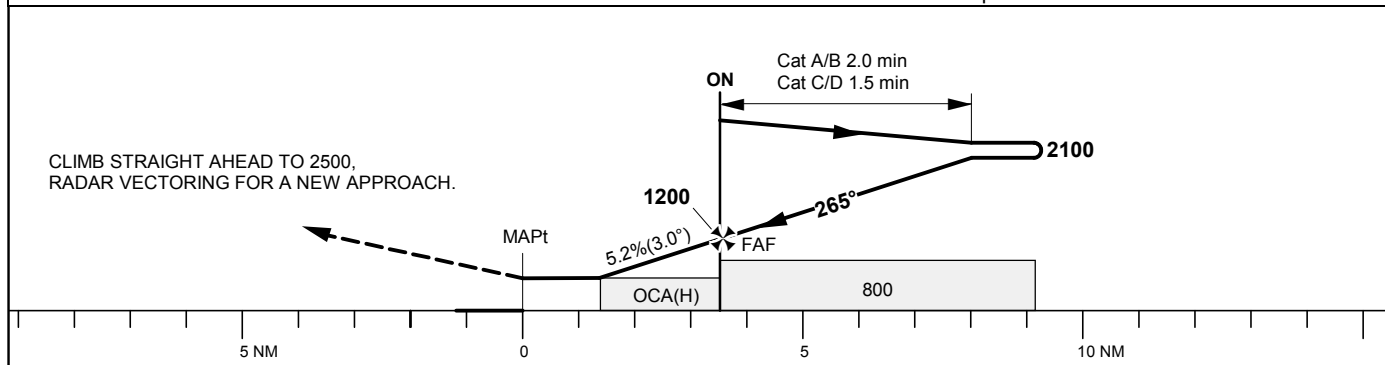
THR ELEV 32.3 ft, AD ELEV 32 ft
OCH are related to THR.
Circling OCH are related to AD ELEV.
BRG are MAG
ALT, HGT and ELEV in ft.

KUNGSÄNGEN TOWER 120.355
ÖSTGÖTA APPROACH 132.955



TA 5000 ft AMSL

Max speed within racetrack 210 kt IAS



OCA (H)					Final approach	Distance FAF-MAPt 3.5 NM						
Cat of ACFT	A	B	C	D	DME SP NM	2			3			
Straight-in Approach	510 (480)				ALT	660			980			
					GS	kt	80	100	120	140	160	180
Circling S RWY	560 (530)	620 (590)	860 (830)	880 (850)	Time	min:s	2:39	2:07	1:46	1:31	1:19	1:11
					Rate of descent	ft/min	425	530	635	745	850	955

CHANGE: Editorial